



Prescott School District
1220 St. Croix Street
Prescott, WI 54021

NON-PROFIT ORGANIZATION
 U.S. POSTAGE
PAID
 PERMIT #45
 PRESCOTT, WI

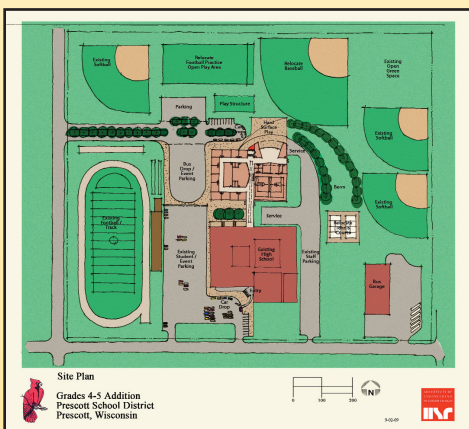
ECRWSS
 POSTAL - CUSTOMER - LOCAL

Fundamental Facts

2009 Prescott School Referendum Information

Why is a building project needed?

In 2004 the School Board looked at the number of classrooms and square footage of Malone Elementary and determined the maximum recommended capacity was between 450 and 500 students. Malone Elementary has grown by 85 students over the past five years to a total of 541 students. A committee of seventeen members including, community members, parents, school employees, a student and school board members used various data to predict average class sizes at Malone. The committee predicted there will be 100 students per grade totaling 600 students within the next five to ten years.



The Intermediate School (above) is being designed with all areas needed for a complete Intermediate School. It will have six classrooms for each grade and sufficient space and services to last well into the future. Malone would serve as a K-3 building.



The Intermediate (4-5) School students would be separated from the high school students. There would be no

reason for Intermediate students to enter the high school. Once the school day begins, people entering the Intermediate School must pass through the office to gain access to the school.

Is this a long term solution?

Yes, this is at a minimum a ten year solution to overcrowding at Malone Elementary. This will move 160-200 students out of Malone freeing up six additional classrooms.

There is still the possibility of adding four classrooms on the third level of the Middle School should additional space be needed for grades 6, 7, and 8.

In the future there is also the potential to add classrooms under the lower level over hang of the High School facing the football field for increasing high school enrollments.

The Intermediate School gymnasium will also help to alleviate the problems with lack of gym space we are currently experiencing outside of regular school hours.



What will happen if it doesn't pass?

Our need for additional space will not go away, and could lead to larger costs in the future. The S.A.G.E. program in grades K-3 will be in serious jeopardy without needed space. We would continue to have serious space issues at Malone with or without S.A.G.E.

We may cease to be a school of choice and could be a less desirable location for families. Current problems with lack of gym space for school and community activities will only increase.

What is the project cost?

The Intermediate School will cost \$8.9 million. A conservative estimate is an average mill rate increase of .89 mills or \$89 per \$100,000 in equalized property values each year over 20 years. The average .89 mill increase would cost an additional \$178 a year on a \$200,000 home or \$14.84 a month.

Interest rates remain low at this time. Construction bids are expected to be very competitive with the shortage of projects in the area. There is the possibility of qualifying for some interest free bonds through the federal government with the stimulus package for approved shovel ready projects.

What are the enrollment projections for the next 5-7 years?

An enrollment study done in May of 2008 utilized four different scenarios to determine enrollment growth. All the scenarios showed continued enrollment growth, especially at the elementary level. The committee agreed to use the figure of 100 students per grade, which would soon put Malone over 600 students. Malone has grown by 85 students in the past five years.



PRESCOTT
 School District
A Tradition of Excellence

Will the 4th and 5th graders be using parts of the high school for academics or core areas?

Grades 4 & 5 will not need to enter the high school for classes as the Intermediate School should meet their needs.

Why not add a third level to the Middle School?

The planning committee was asked to provide a solution with a 10-year + life cycle. An addition to the Middle School is only a short-term response since this space will likely be needed for increasing enrollments in grades 6, 7 and 8 in the near future. Moving fifth grade to the middle school would only free up three classrooms at Malone.

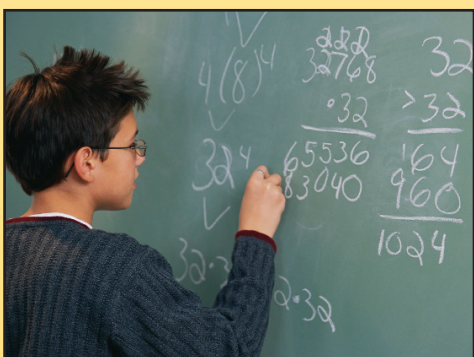


Why build an Intermediate School for grades 4 and 5 and not grades 7 & 8 on the High School Site?

The current Middle School reopened in 2006 with intensive remodeling and a small addition. The Middle School, which serves grades 6, 7 and 8, has areas built specifically for a Middle School and not needed for an Intermediate School. Improvements to the Middle School did not add to our enrollment capacity at that site. Areas that were designed/built specifically for Middle school students include:

- Three Computer Labs
- Three Science Labs
- Band Room
- Industrial Education (shop)
- Family and Consumer Education
- Locker rooms with showers

It would be very costly to rebuild these areas on a new site while not utilizing them at the Intermediate School.



Why not just add on to the Malone Elementary School?

Malone School currently takes up 54,500 square feet. All of its core facilities (gym, library, kitchen, restrooms, music and art rooms) are too small to accommodate more students. A building designed for 4-5th graders would need 48,000 square feet. This would take up a large portion of the existing playground and ball fields. The current school is also lacking appropriate parking space for staff and visitors.



Are there any other communities that have other grade levels on high school sites?

This is very common for schools to have various grades on the same site. The key is to keep the students separated. The following is a list of a few area school districts that have grades beyond 9-12 on their high school sites:

- Boyceville – 7-12
- Glenwood City – K-12
- Colfax – K-12
- St. Croix Falls – 5-12
- Cumberland – 5-12
- Unity – K-12
- Durand – 7-12
- Hudson – K-8 (Prairie Elementary & Middle School)



Why don't we build a new high school?

A number of years ago the plan was to build a new high school and move the middle school to the current high school. The citizens rejected this plan as being cost prohibitive. The recent renovations and additions to the middle school means the middle school students will stay at the current location. The cost of a new high school is also prohibitive, and that much space is not needed at this time.

What is the financial impact of dropping S.A.G.E.?

We would lose \$160,000 in state funding that helps support smaller class sizes. Loss of the smaller class sizes in the younger grades has been statistically shown to negatively impact student learning. After 3rd grade the class size has less of an impact which is why S.A.G.E. is only offered by the state in K-3rd grade.



Official Referendum Ballot Question

“BE IT RESOLVED by the School Board of the School District of Prescott, Pierce County, Wisconsin that there shall be issued pursuant to Chapter 67 of the Wisconsin Statutes, general obligation bonds in an amount not to exceed \$8,900,000 for the public purpose of paying the cost of constructing and equipping an intermediate school addition to the high school including site improvements.”

Polling Places and Hours Tuesday, November 17, 2009

City of Prescott

Prescott City Hall
800 Borner Street
Prescott, WI 54021
Polling Hours: 7:00a.m. to 8:00 p.m.
Absentee Ballot Contact:
Elizabeth Frueh (715) 262-5544

Town of Clifton

Clifton Town Hall
W11705 County Rd FF
River Falls, WI 54022
Polling Hours: 7:00a.m. to 8:00 p.m.
Absentee Ballot Contact:
Judy Clement-Lee (715) 426-6332

Town of Oak Grove

Oak Grove Town Hall
N5495 County Rd QQ
Prescott, WI 54021
Polling Hours: 7:00a.m. to 8:00 p.m.
Absentee Ballot Contact:
Jim Allen (715) 262-5226

Town of Diamond Bluff

Diamond Bluff Town Hall
W9870 290th Ave.
Hager City, WI 54014
Polling Hours: 7:00a.m. to 8:00 p.m.
Absentee Ballot Contact:
Bob Schlichting (715) 792-2526

Town of Trimbelle

Trimbelle Town Hall
W9115 501st Ave.
Ellsworth, WI 54011
Polling Hours: 7:00a.m. to 8:00 p.m.
Absentee Ballot Contact:
Mary Kees (715) 273-5860