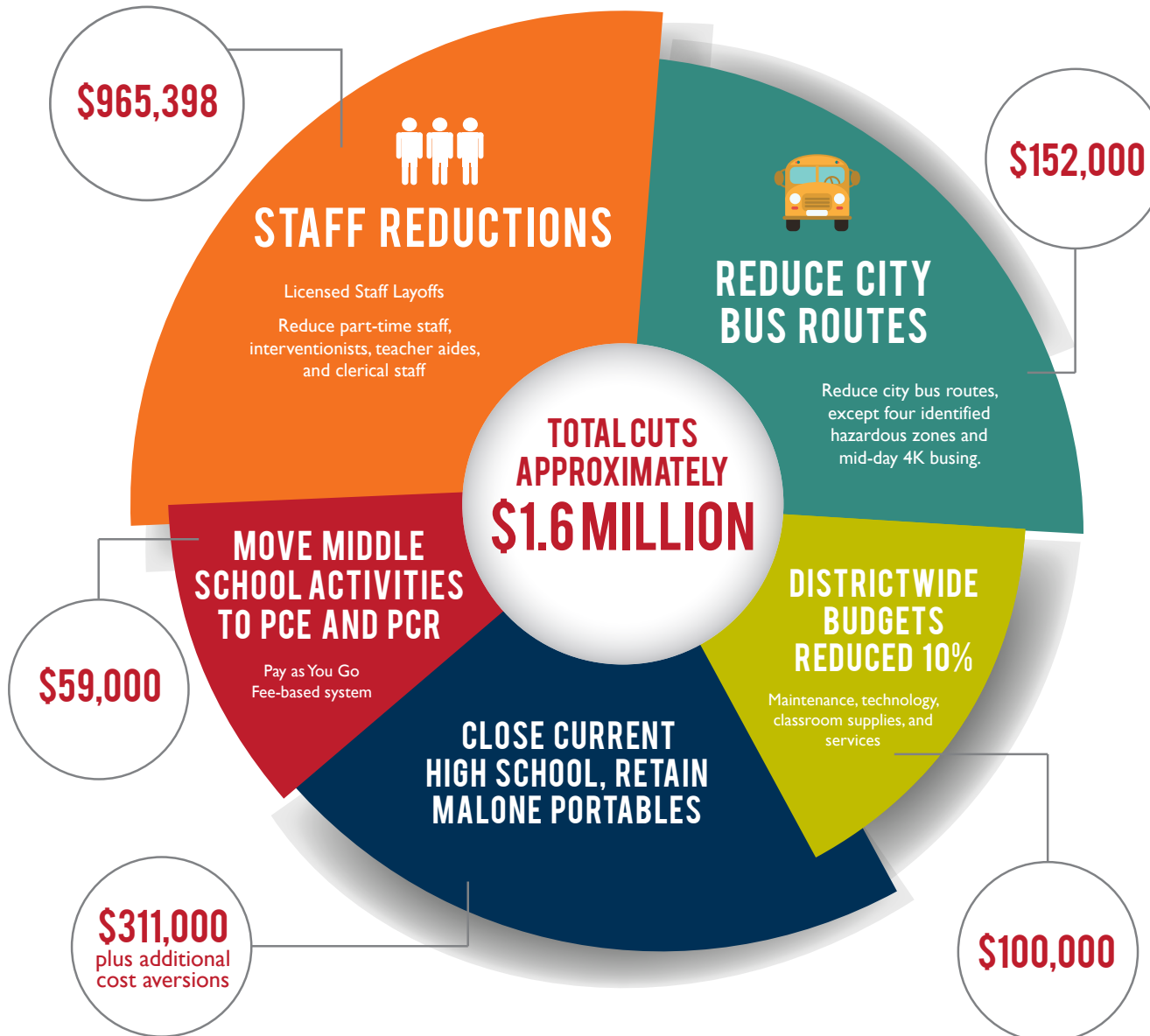


2016 SCHOOL DISTRICT BUDGET CUTS

The February election ballot question, requesting approval for local school operating funds, did not pass. After the election, the Prescott School District began discussions to make significant reductions to the budget for next year. The Prescott School Board approved specific budget cuts to meet the resulting loss of \$1.46 Million in revenue. This chart illustrates the cuts that will be effective beginning fall 2016.



STAFF REDUCTIONS

Malone class sizes will increase ranging from 19 to 24 students per classroom, with an average of 22 students. Middle School will eliminate business, Career and Technical Education, and will reduce band and choir contact time within the school day. High School will increase section sizes, and reduce staffing in business, Phy Ed, English Language Arts, and Math.

CITY BUS ROUTES

City bus routes will be reduced, affecting students in grades 4k-12 and St. Joseph Parish School. Cost reductions include elimination of four bus driver positions, elimination of some city routes, and putting off the purchase of future buses.

DISTRICTWIDE BUDGET CUTS

A 10% cut in budgets across all departments will reduce money available for ongoing maintenance, preventive upkeep, and long-term projects. It will also result in less investment in technology, classroom supplies and materials, and a reduction in services provided.

CLOSING THE CURRENT HIGH SCHOOL

The reduced budget will not support operating four buildings. The new high school on Dexter Street will open for the 2016-2017 school year. Elementary students (K-5) will remain at Malone and the portables will be kept. The current high school, including the gymnasium, will be closed to student and public use.

MIDDLE SCHOOL ACTIVITIES

Middle School athletics and extracurricular activities will move to Prescott Community Education (PCE) and Prescott Community Recreation (PCR). These programs are funded outside the district's general operating budget. Activities would become fee based. Currently, the average cost per athlete, per sport is \$250.