

RENEW LOCAL SCHOOL FUNDING WITH NO INCREASED TAX IMPACT

The school board approved a special election for **Wednesday, May 25, 2016**.

- The ballot question is for recurring local school operational funding at the existing 2011 level. There will be **NO INCREASED TAX IMPACT** on the school portion of property taxes.
- This will renew the \$1.46 million in local funding - just like it currently exists (at \$215 per \$100,000 of value annually).
- The funding will be permanent, so the community and school district have financial stability to move forward with mutually approved plans. This includes providing appropriate educational space, programming, ensuring staffing, safety and security of students, and striving to be a district of choice.

THE FACTS:

The February election to renew and increase the school operational funding failed by 34 votes. This means local operational funding, approved by voters since 1999, has been eliminated. For the first time in over 15 years the district will not have the revenue needed for existing programs, staff, and buildings.

THE FEBRUARY ELECTION FAILED

The February election to renew and increase the school operational funding failed by 34 votes.

WHAT DOES THIS MEAN?

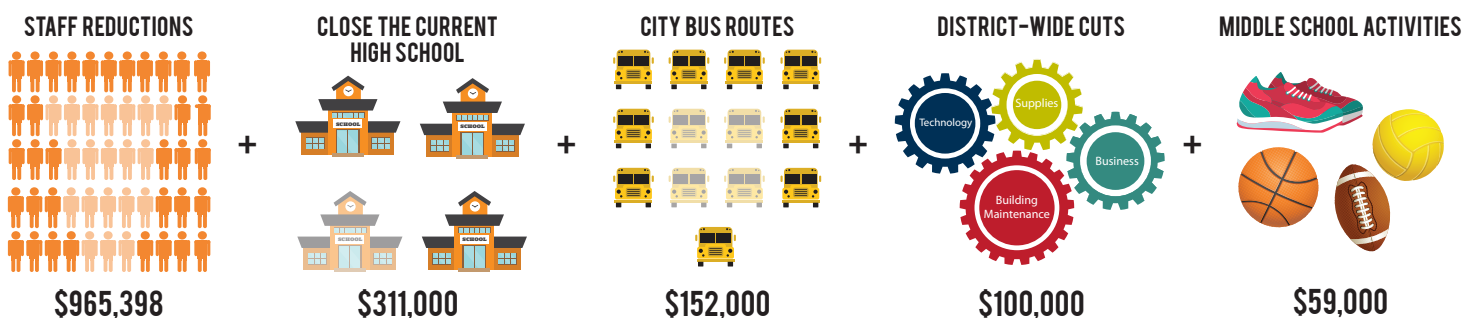
Local school operational funding, approved by voters since 1999, has been eliminated. This is the first time in over 15 years that the district will not have the funding needed for existing programs, staff, and buildings.

IMMEDIATE BUDGET CUTS IN PROGRESS

The loss of \$1.46 million in local funding is 10% of the school operational budget.

WHAT DOES THIS MEAN?

This loss of funding requires immediate cuts - including programs and staffing, transportation, extra-curricular offerings, and operational expenses - that impact the opening of additional classrooms. The School Board approved district-wide budget cuts to meet the funding loss, effective with the 2016-17 budget.



LOOKING TO THE FUTURE

These budget cuts will noticeably impact students, staff, and the entire community. The school board is committed to ensuring the best possible outcomes for student retention, community support and becoming a district of choice.

WHAT DOES THIS MEAN?

The budget cuts will be implemented as approved. However, if local funding is renewed on May 25, the district and community can deliver on the mutual promise to operate four buildings. This will alleviate overcrowding at Malone and create space for community education and senior gathering as planned. Other priorities, aligned with long-range plans, will be reviewed in relation to final budget resources.

A VOTE ONLY COUNTS IF IT IS CAST – PLEASE VOTE MAY 25, 2016

THE BALLOT QUESTION:

“Shall the School District of Prescott, Pierce County, Wisconsin, be authorized to exceed the revenue limit specified in Section 121.91, Wisconsin Statutes, by \$1.46 million starting with the 2016-17 school year and thereafter, for recurring purposes consisting of ongoing district operational costs?”

WHAT DOES THIS MEAN?

A **“YES”** vote will support the renewal of local funding at the current level of \$1.46 million, WITH NO INCREASED TAX IMPACT on the school portion of local taxes. This would be permanent funding starting in fall 2016. With a successful election, the district can reinstate priorities that align with long-range plans the community has supported in the past.

A **“NO”** vote will reject the renewal of existing local funding and the board approved budget cuts will become permanent beginning with the 2016-17 school year.

Elections will be conducted at regular polling locations. For more information about the election, contact information for school board members; and more:

Prescott School District: www.prescott.k12.wi.us 715-262-5782

Polling Locations:

Prescott City Hall
800 Borner St., Prescott
7 a.m. - 8 p.m.

Oak Grove Town Hall
N4939 1100th St, Prescott
7 a.m. - 8 p.m.

Clifton Town Hall
W11705 Cty. Rd. F, River Falls
7 a.m. - 8 p.m.

Trimbelle Town Hall
N5310 - 800th St., Ellsworth
7 a.m. - 8 p.m.

Diamond Bluff Town Hall
W9870 290th Ave., Hager City
7 a.m. - 8 p.m.