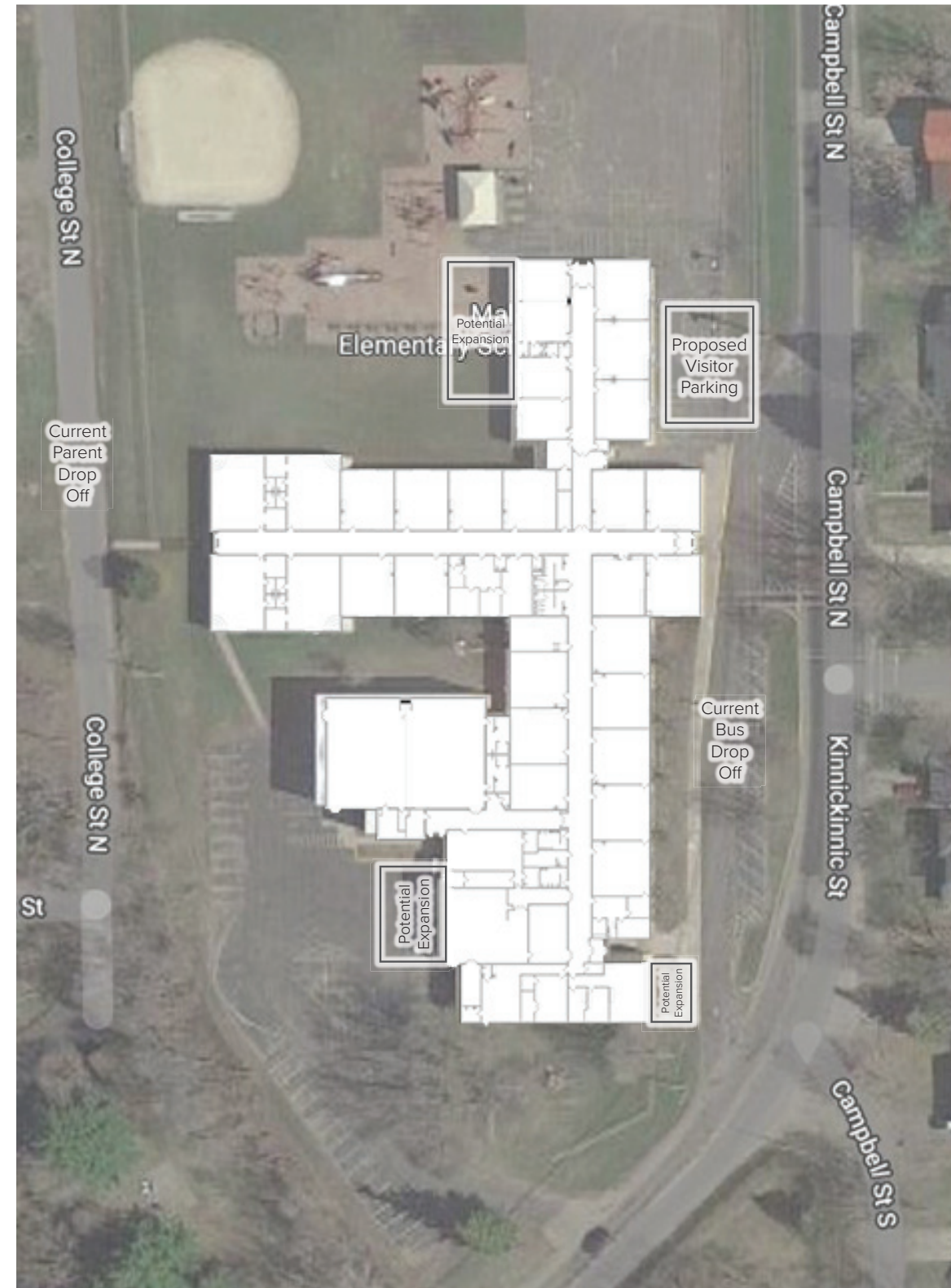



 EXISTING SITE PLAN

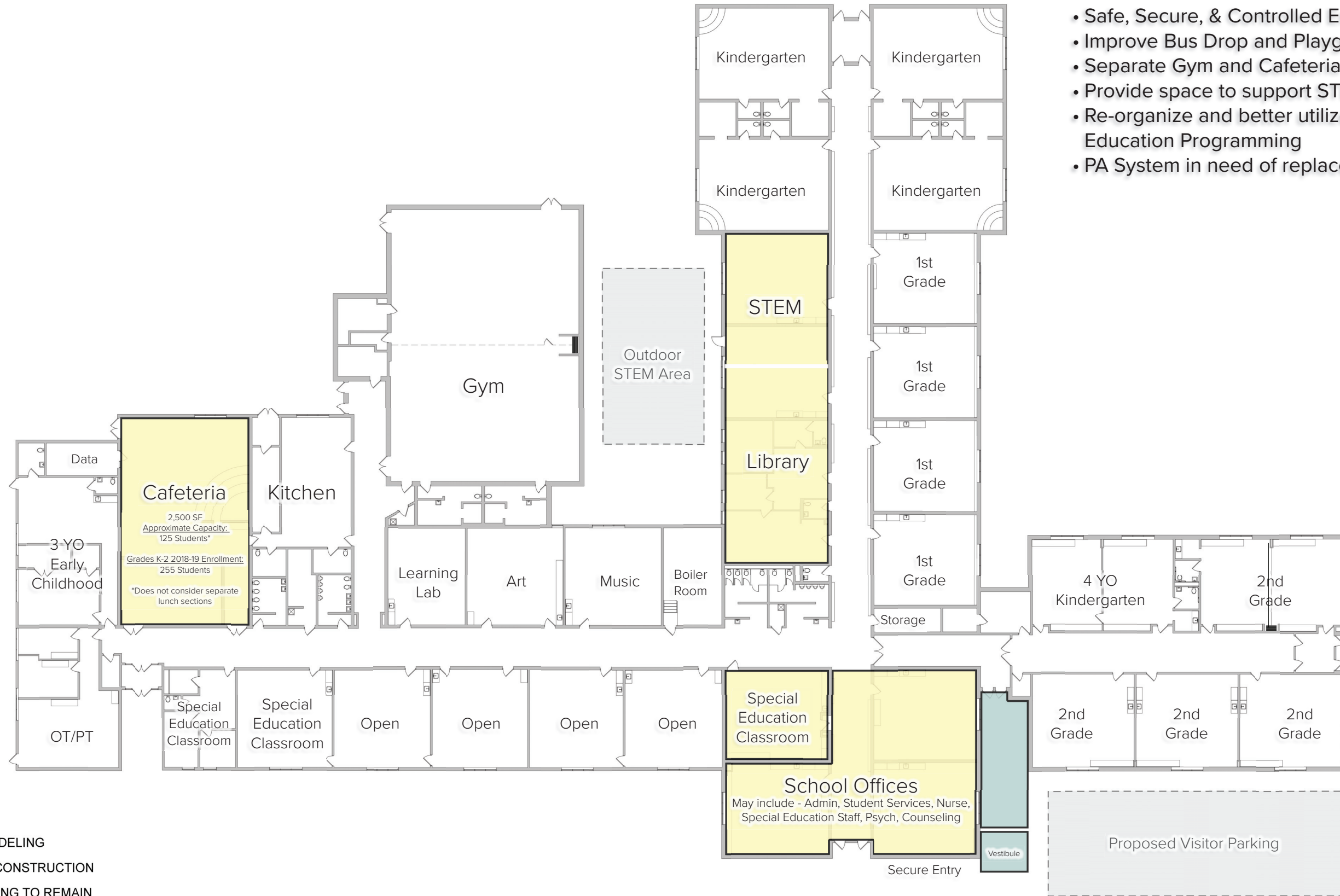



 PROPOSED SITE PLAN

MALONE ELEMENTARY SCHOOL

Conceptual Design A (K-2 and Improvements)

(4) Classrooms required per grade



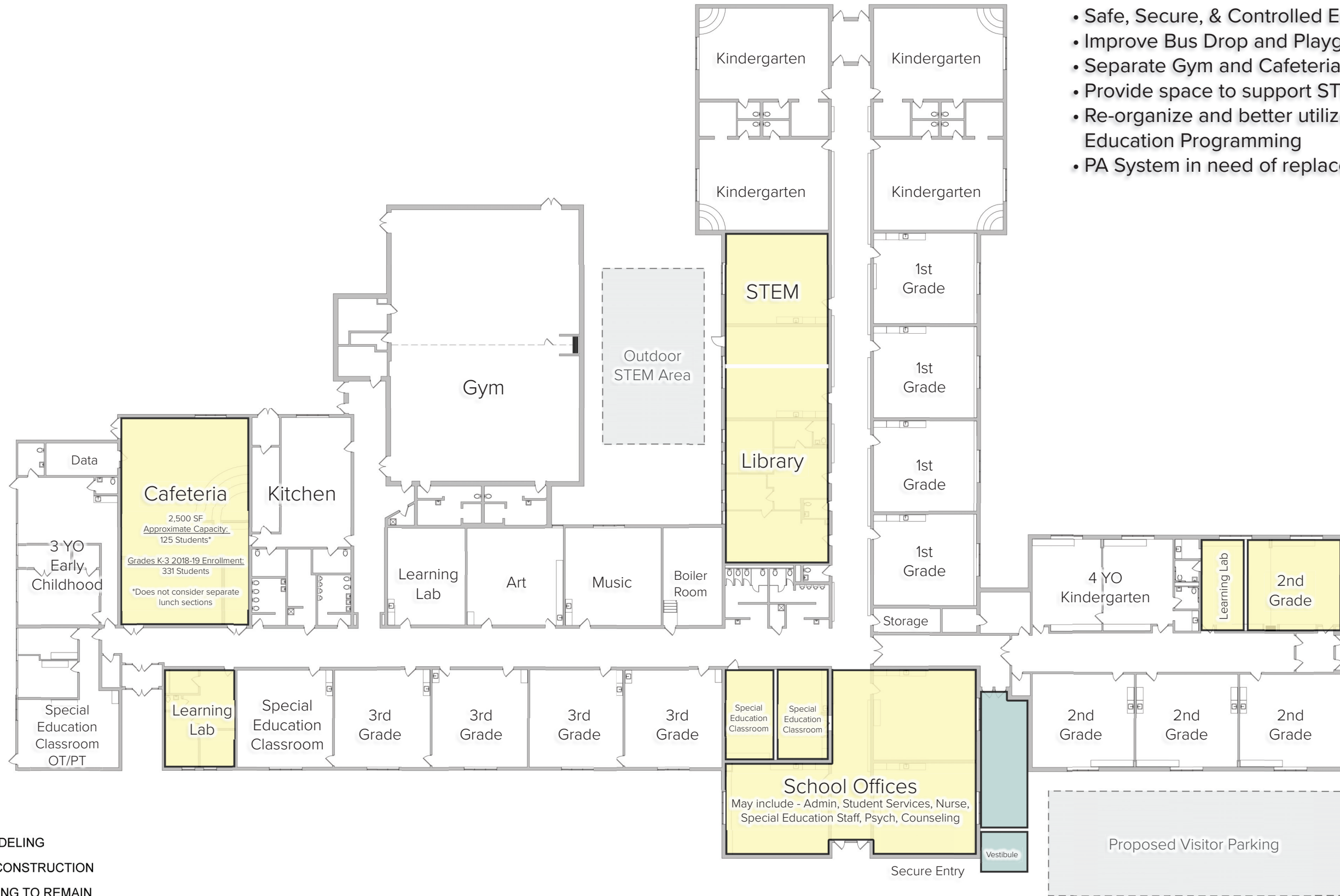
- Safe, Secure, & Controlled Entryway
- Improve Bus Drop and Playground Supervision
- Separate Gym and Cafeteria
- Provide space to support STEM
- Re-organize and better utilize space for Special Education Programming
- PA System in need of replacement

- REMODELING
- NEW CONSTRUCTION
- EXISTING TO REMAIN

MALONE ELEMENTARY SCHOOL

Conceptual Design B (K-3 and Improvements)

(4) Classrooms required per grade



- Safe, Secure, & Controlled Entryway
- Improve Bus Drop and Playground Supervision
- Separate Gym and Cafeteria
- Provide space to support STEM
- Re-organize and better utilize space for Special Education Programming
- PA System in need of replacement

- REMODELING
- NEW CONSTRUCTION
- EXISTING TO REMAIN

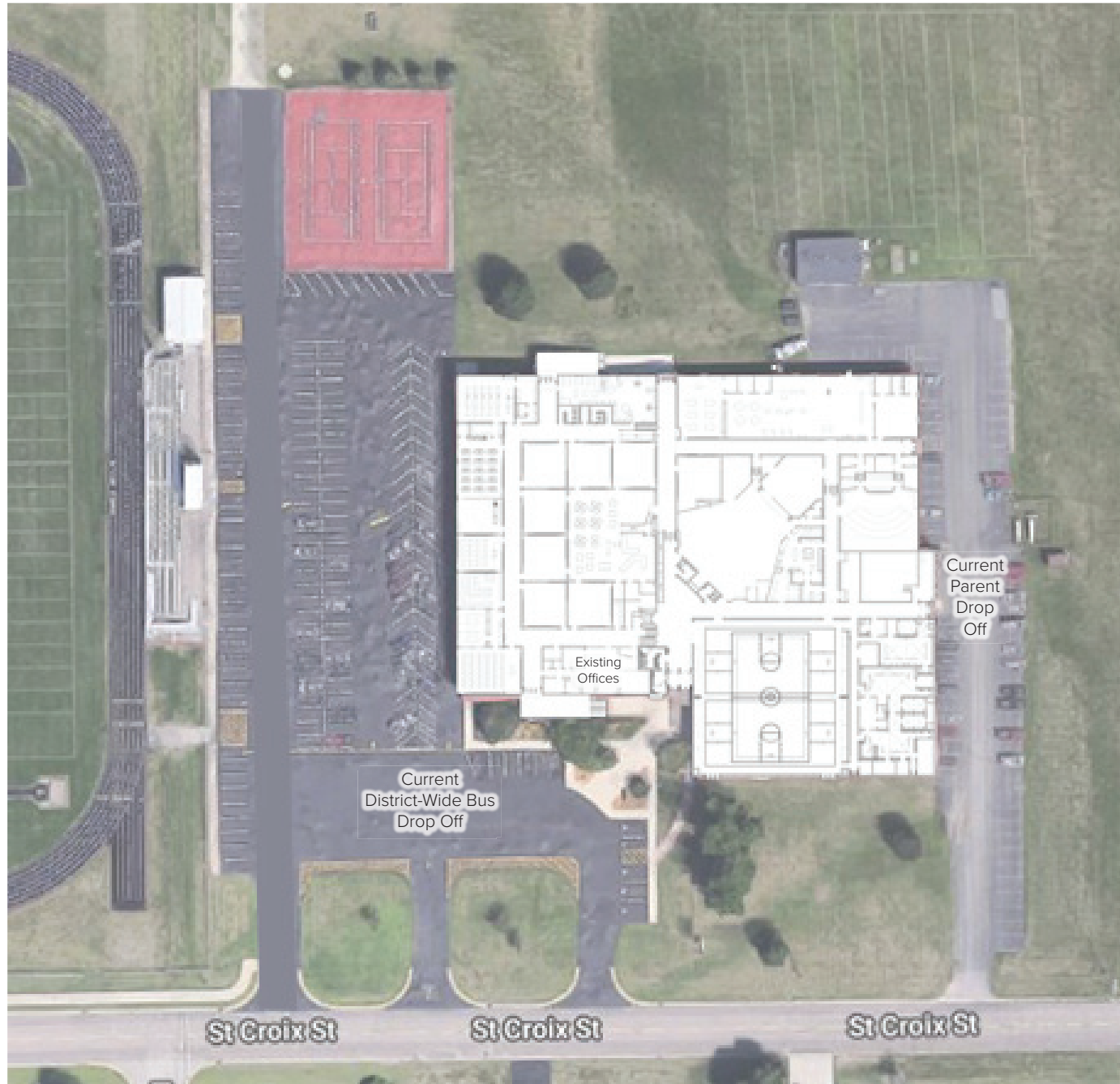
MALONE ELEMENTARY SCHOOL

Conceptual Design C (K-3 and Improvements with Future Growth)

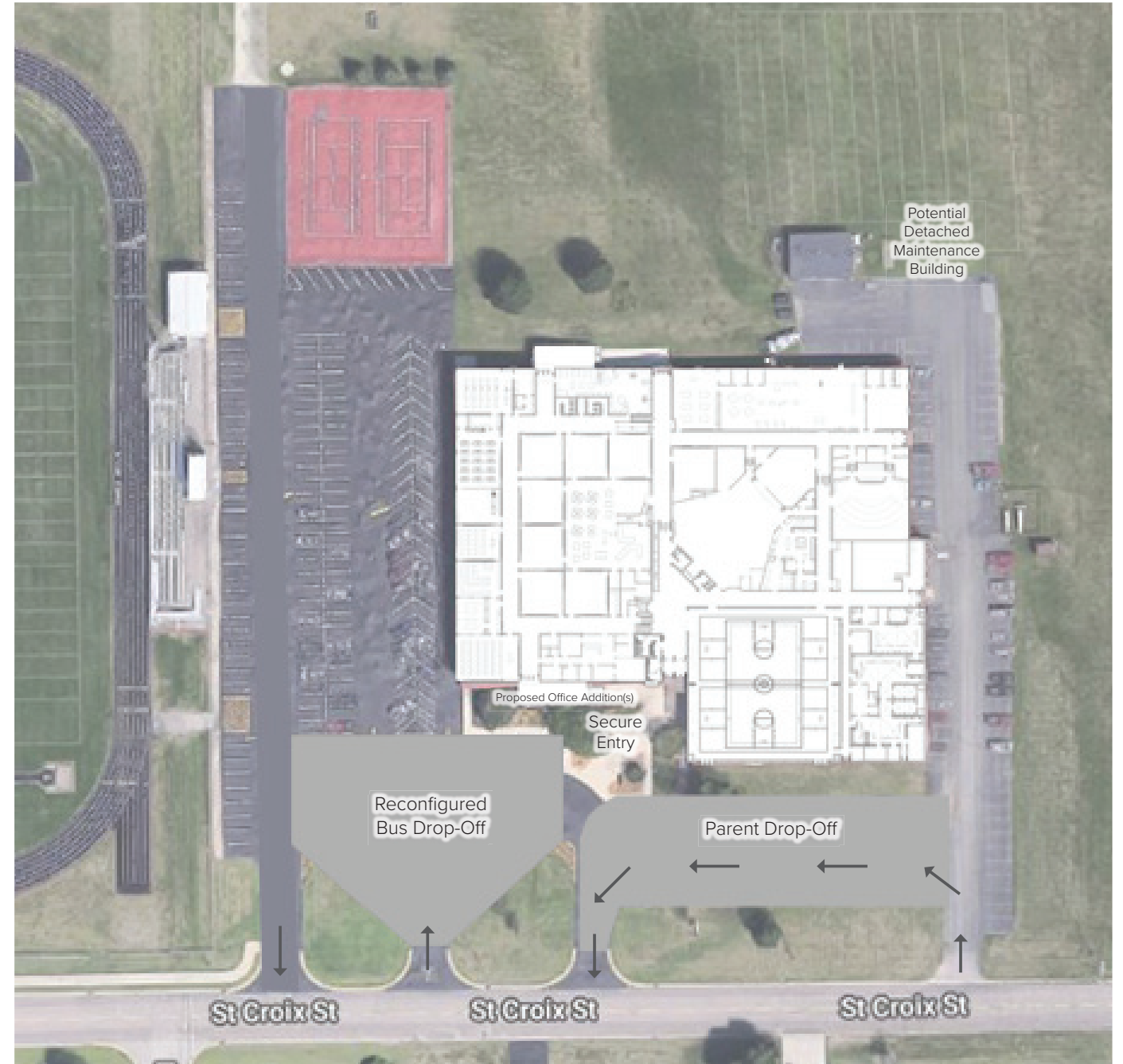
*Future planning if legislature approves all-day 4K
(4) Classrooms required per grade*



- Safe, Secure, & Controlled Entryway
- Improve Bus Drop and Playground Supervision
- Separate Gym and Cafeteria
- Provide space to support STEM
- Re-organize and better utilize space for Special Education Programming
- PA System in need of replacement

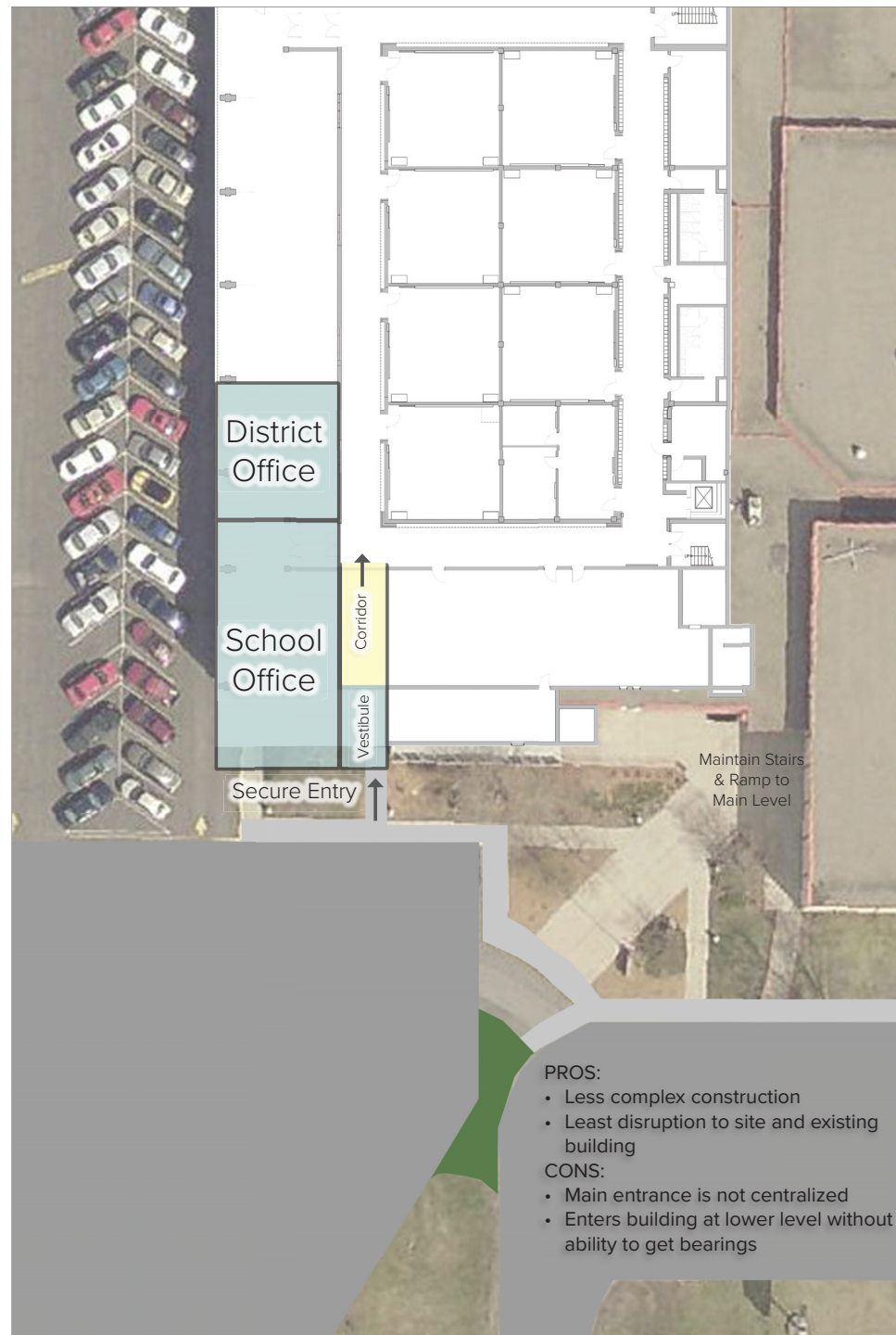



 EXISTING SITE PLAN

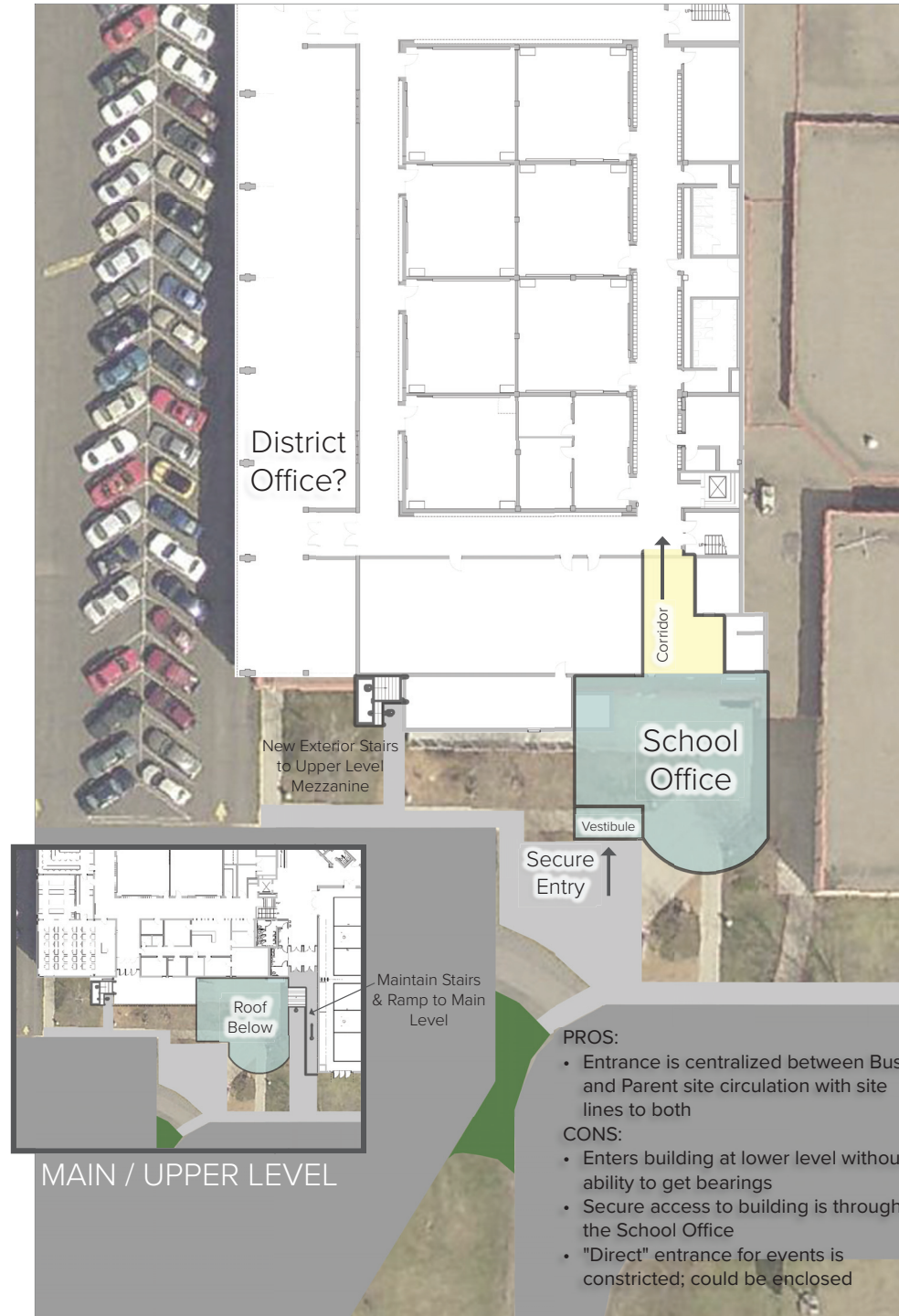



 PROPOSED SITE PLAN

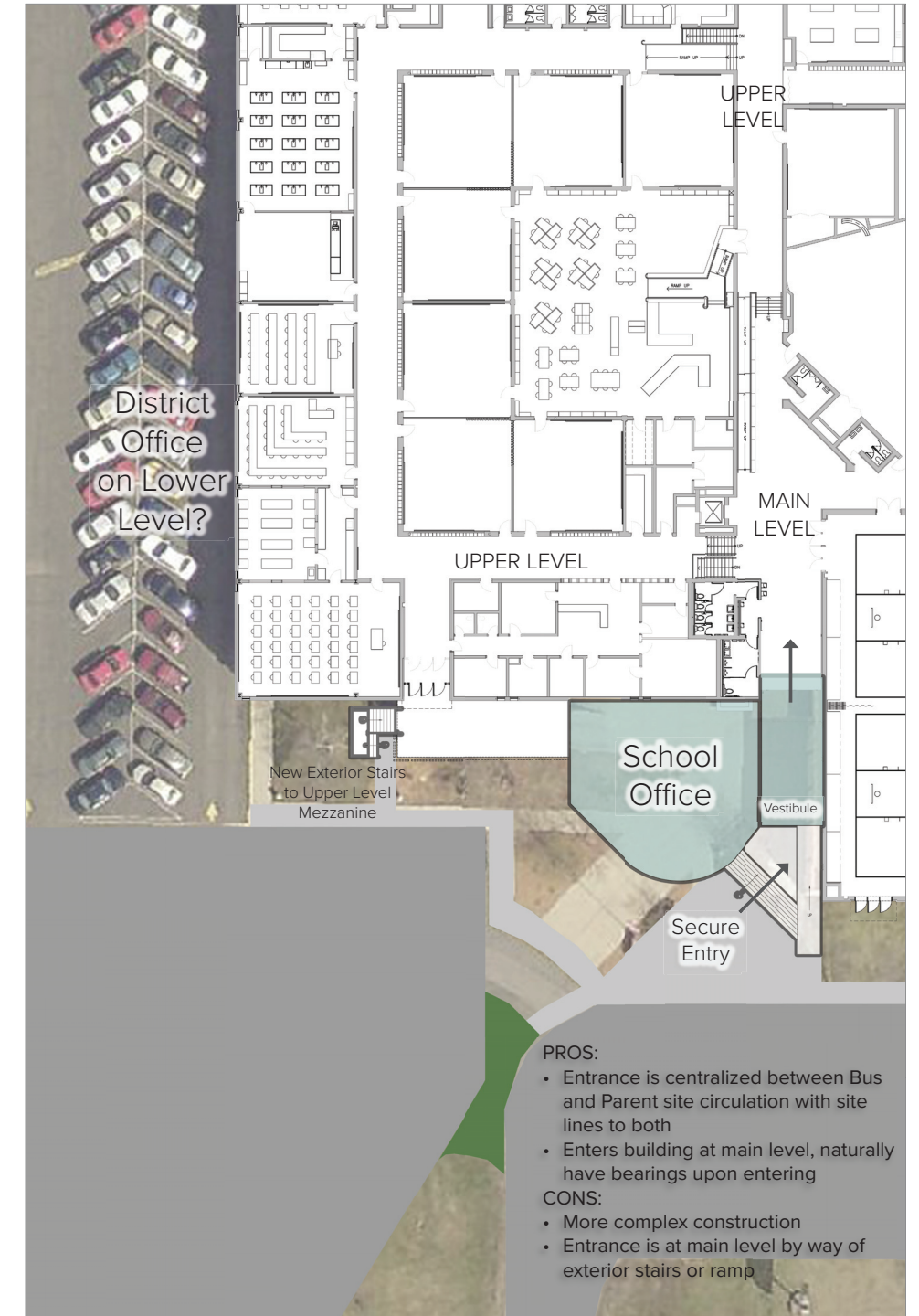
- REMODELING
- NEW CONSTRUCTION
- EXISTING TO REMAIN



 **CONCEPT A**
ENTRANCE AT LOWER LEVEL



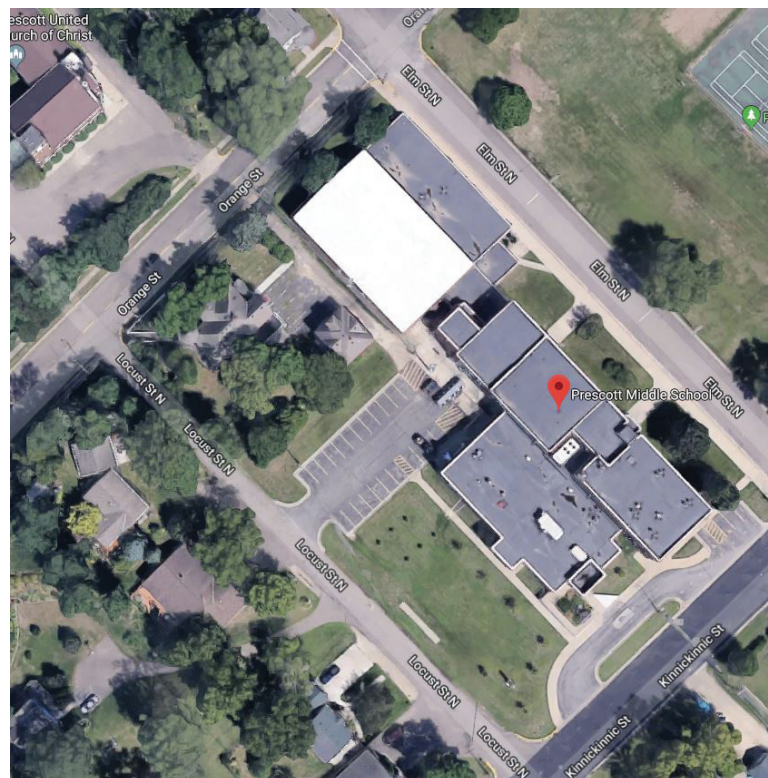
CONCEPT B
ENTRANCE AT LOWER LEVEL




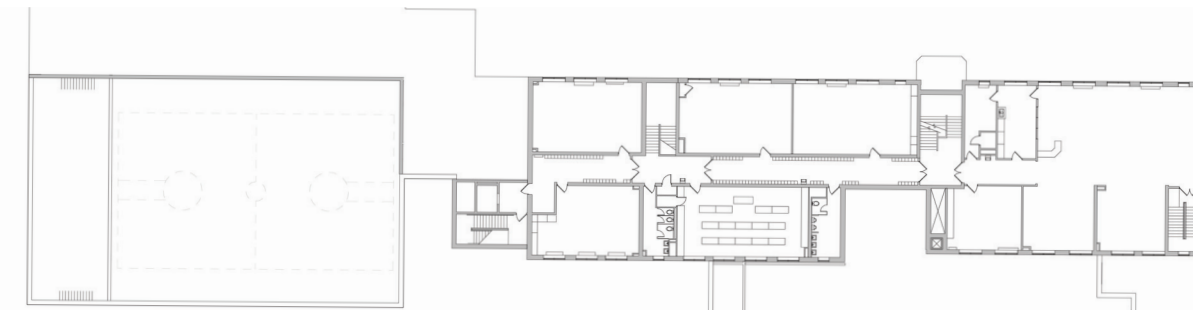
CONCEPT C
ENTRANCE AT MAIN LEVEL

- Safe, Secure, & Controlled Entryway
- Poor Office Configuration + Counseling, Psych, etc., need for Reset Rooms
- Special Education Classrooms are not sized to allow for adequate programming
- Issues with existing lift and ramp
- Choir and Band and undersized for programming and class sizes
- STEM programming required (3) adjacent Classrooms
- Lack of storage

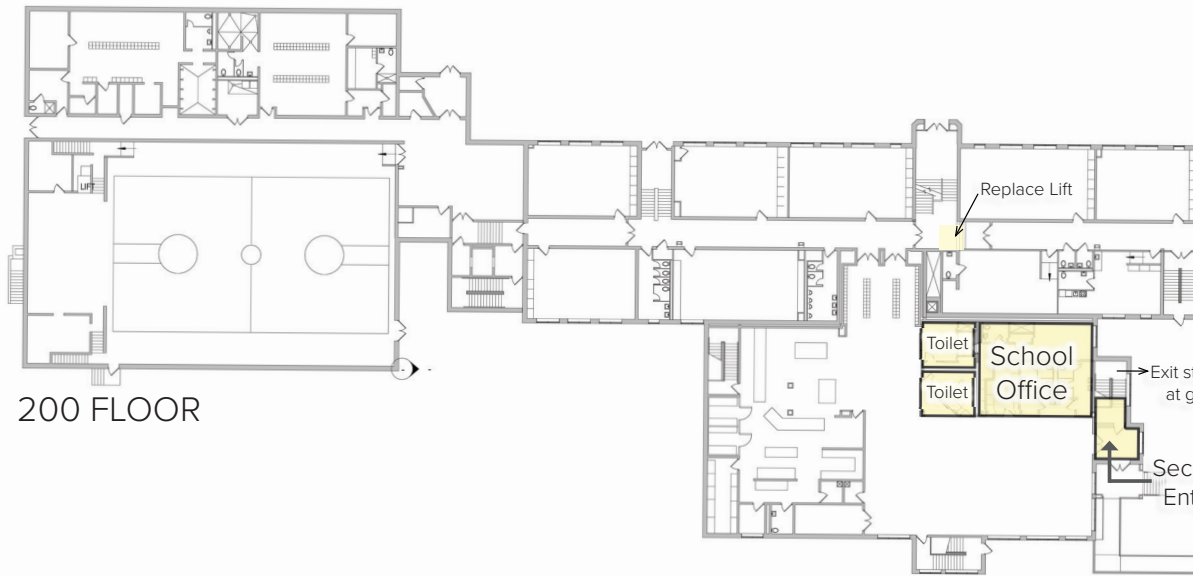
- REMODELING
- NEW CONSTRUCTION
- EXISTING TO REMAIN



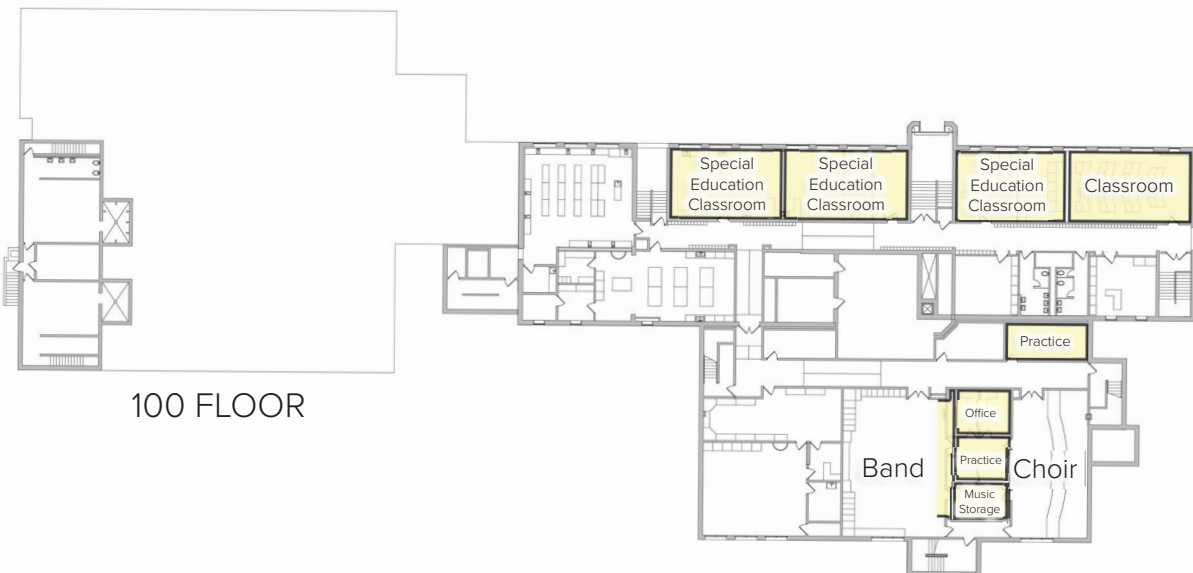
 EXISTING SITE PLAN



300 FLOOR



200 FLOOR



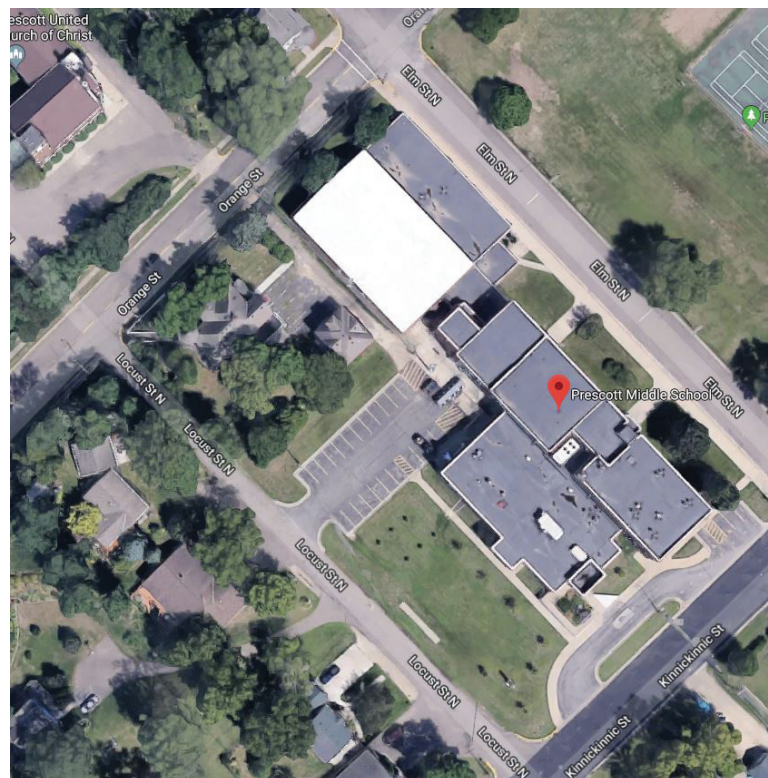
100 FLOOR


ITEMS TO NOTE:

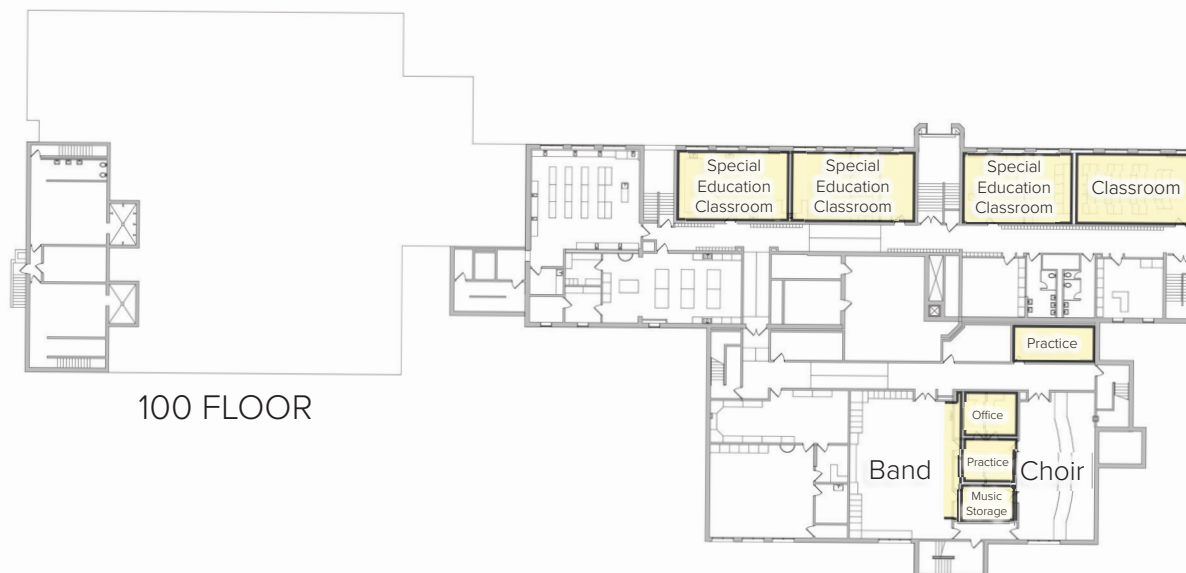
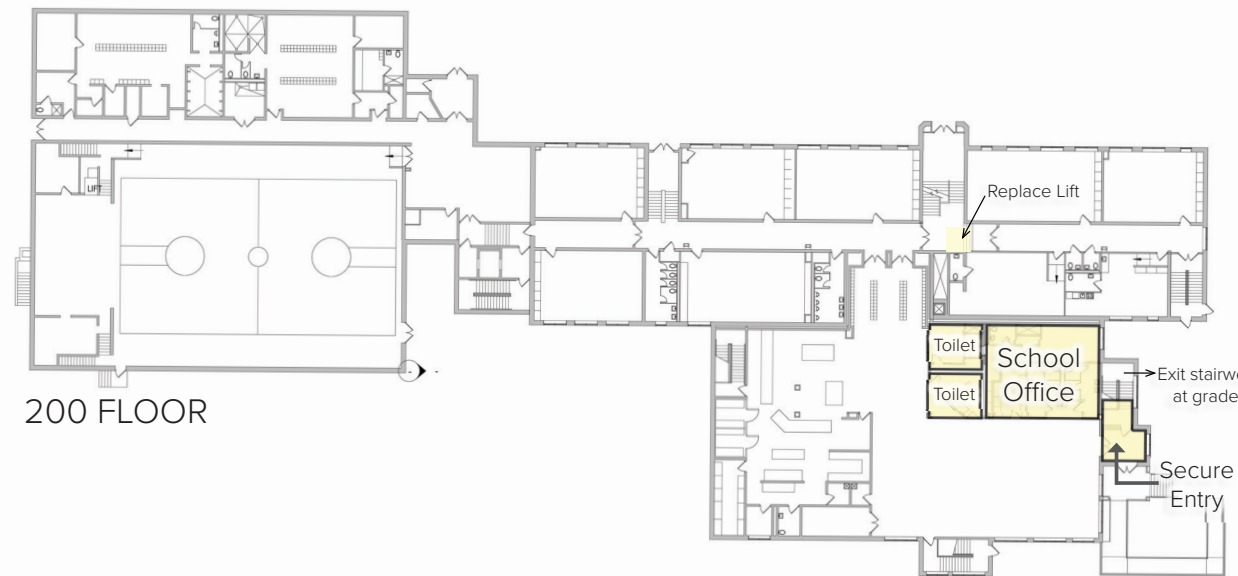
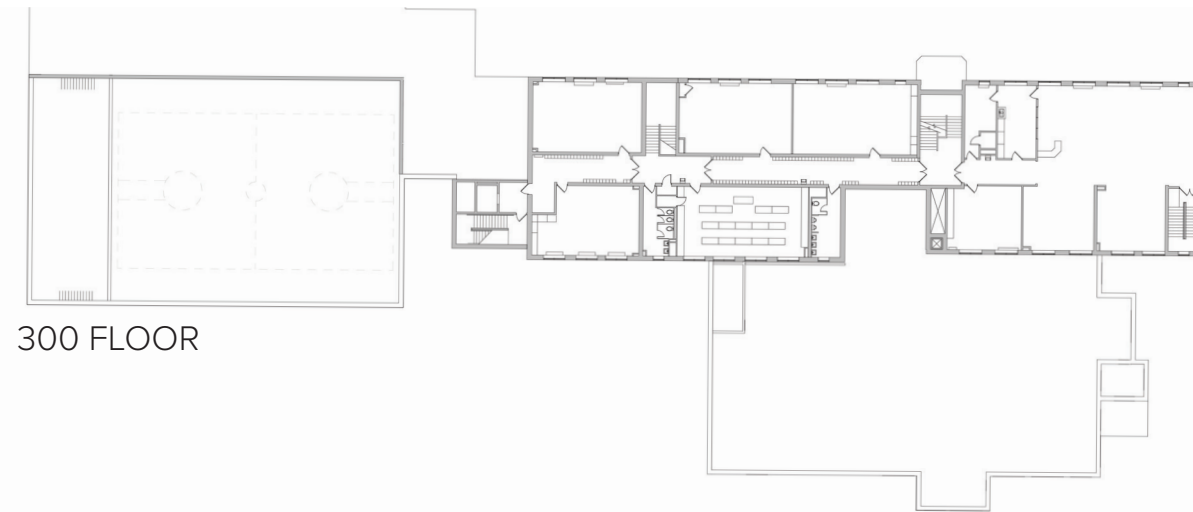
- No square footage available to improve STEM programming spaces
- No square footage available to create Learning Labs

- Safe, Secure, & Controlled Entryway
- Poor Office Configuration + Counseling, Psych, etc., need for Reset Rooms
- Special Education Classrooms are not sized to allow for adequate programming
- Issues with existing lift and ramp
- Choir and Band and undersized for programming and class sizes
- STEM programming required (3) adjacent Classrooms
- Lack of storage

- REMODELING
- NEW CONSTRUCTION
- EXISTING TO REMAIN



 EXISTING SITE PLAN



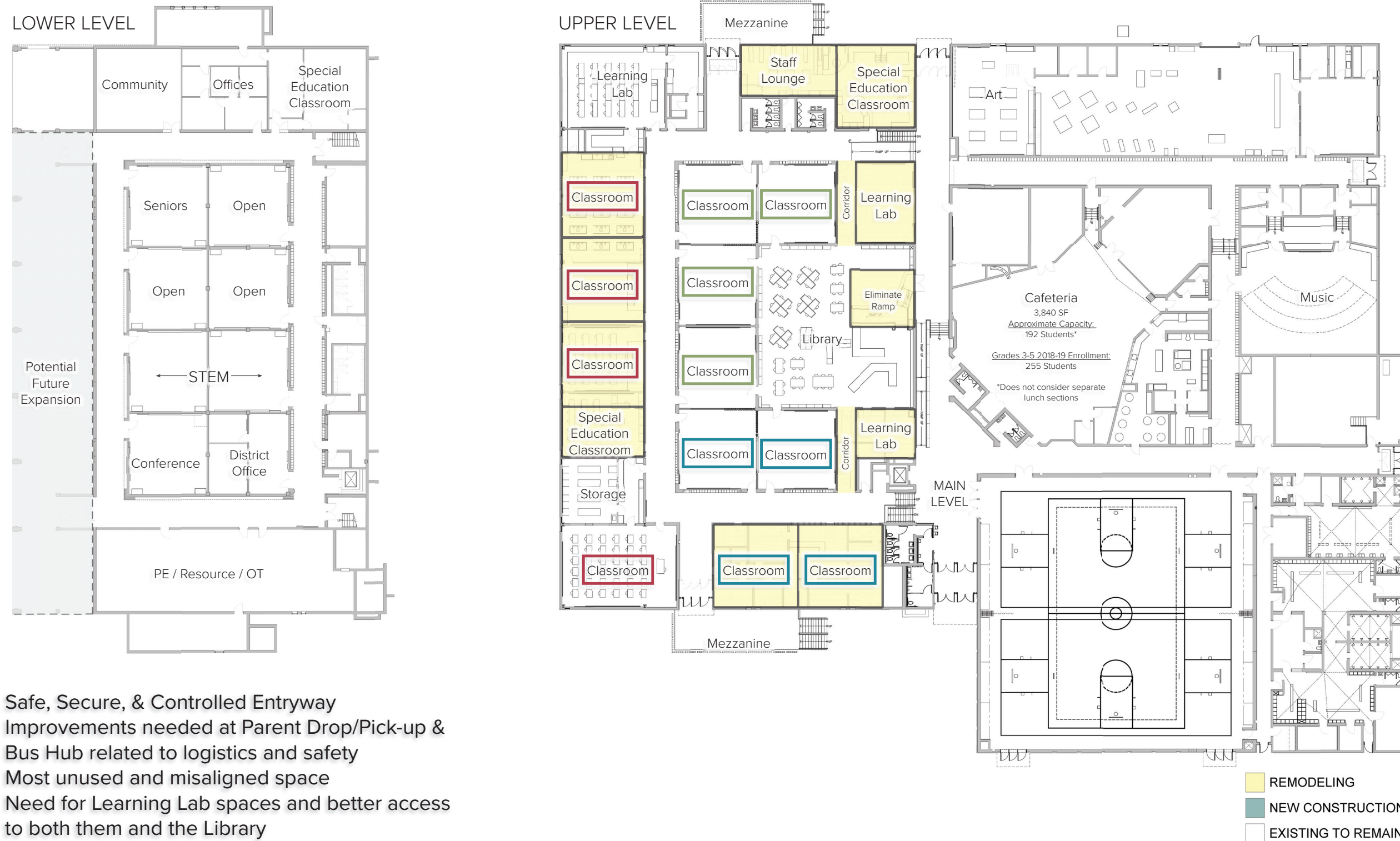
ITEMS TO NOTE:

- Square footage may be available to improve STEM programming spaces
- Square footage may be available to create Learning Labs

MALONE INTERMEDIATE SCHOOL

Classroom Conceptual Design - Option A (Grades 3-5 and Improvements)

*Assumes Grades 6-8 at Middle School
(4) Classrooms required per grade*



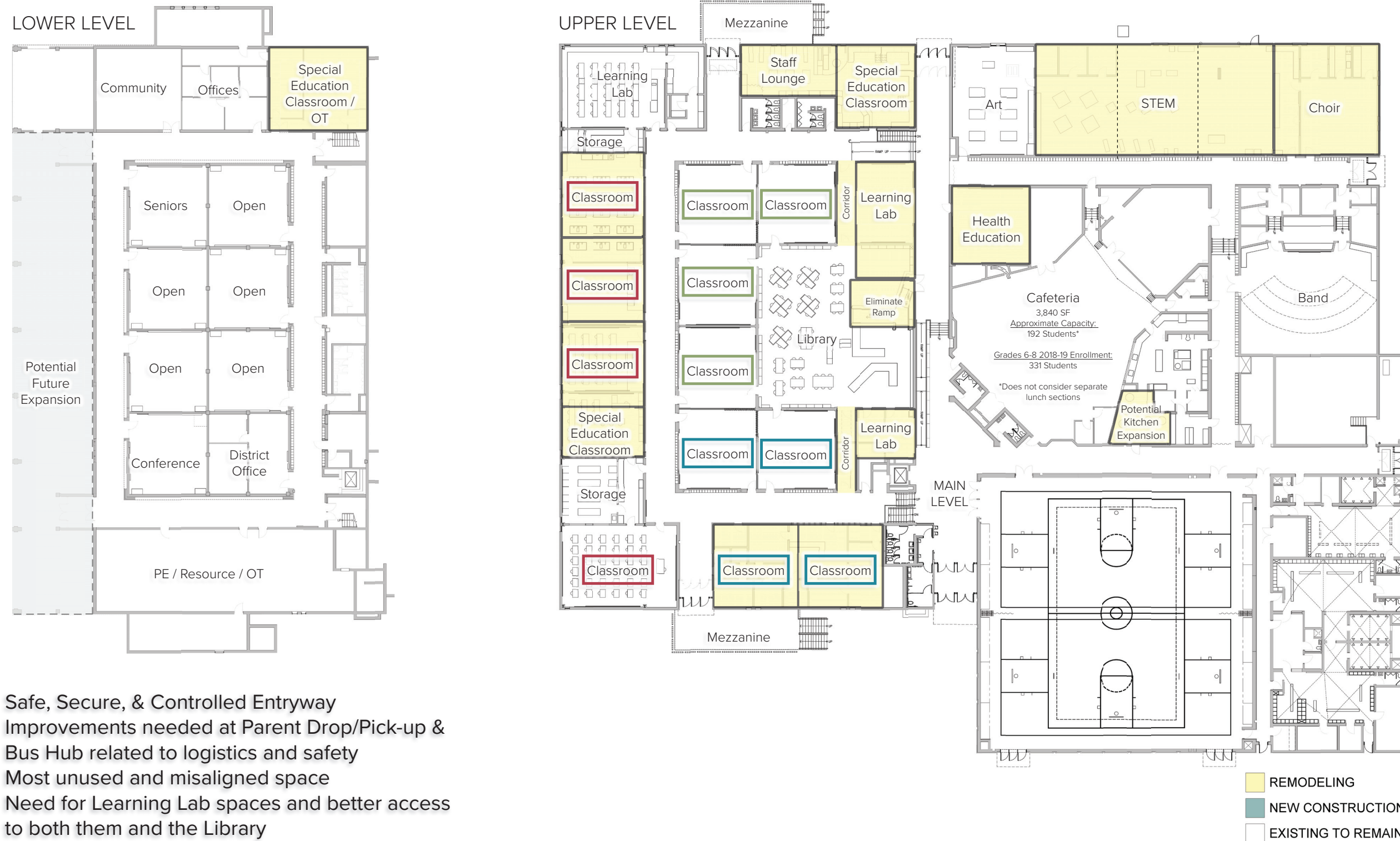
- Safe, Secure, & Controlled Entryway
- Improvements needed at Parent Drop/Pick-up & Bus Hub related to logistics and safety
- Most unused and misaligned space
- Need for Learning Lab spaces and better access to both them and the Library
- Need for Multi-Purpose / Large Group Space
- Need for centrally located Staff Lounge
- Lack of Storage
- District Office location flexible

MALONE INTERMEDIATE SCHOOL

Classroom Conceptual Design - Option D (Grades 6-8 and Improvements)

*Assumes Grade 3 at Elementary School and Grades 4-5 at Middle School
(4) Classrooms required per grade*

Detached
Maintenance
Building



- Safe, Secure, & Controlled Entryway
- Improvements needed at Parent Drop/Pick-up & Bus Hub related to logistics and safety
- Most unused and misaligned space
- Need for Learning Lab spaces and better access to both them and the Library
- Need for Multi-Purpose / Large Group Space
- Need for centrally located Staff Lounge
- Lack of Storage
- District Office location flexible

EXAMPLE POTENTIAL PROJECT SCHEDULE



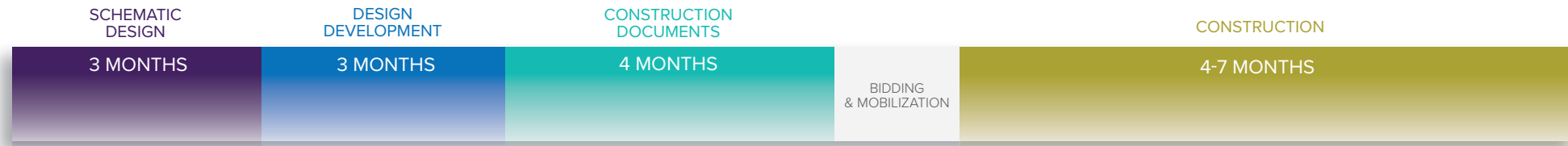
**MALONE
ELEMENTARY
SCHOOL**

PROPOSED



**MALONE
INTERMEDIATE
SCHOOL**

PROPOSED



**PRESCOTT
MIDDLE
SCHOOL**

PROPOSED

